



National Institute for Health Development of Estonia

The Centre for Disease Prevention and Control of Latvia

Health Information Centre, Institute of Hygiene, Lithuania

Health in the Baltic Countries

2013

22nd edition

2015

CONTENTS

Preface.....	5
Resident population.....	5
General data.....	6
Population by age.....	7
Trends of demographics indicators.....	8
Resident population by age and gender.....	9
Natality, mortality and natural increase per 1000 population.....	10
Life expectancy at birth in EU member states.....	11
Life expectancy at 45 years of age in EU member states.....	12
Death cause per 100 000 population.....	13
Main cause of death.....	14
Age-standardised death rates.....	15
Selected causes of death per 100 000 population.....	18
Infant mortality per 1000 live births.....	19
Structure of infant mortality in percentage.....	20
Infant mortality by cause per 10 000 live births.....	21
Perinatal, neonatal and maternal mortality.....	21
Births rate by age of mother.....	22
Abortions.....	23
Selected results of health behaviour survey.....	24
Health facilities.....	25
Practising physicians by speciality.....	26
Hospital beds by speciality.....	27
Selected notifiable diseases per 100 000 population.....	28
Incidence of malignant neoplasms by main sites.....	29
Hospital beds use by speciality.....	30
Discharges by groups of diseases.....	31
Surgical operation in the hospitals.....	32
Sales of medical products by ATC groups.....	33
Average salary of medical personnel.....	34
Health care expenditures.....	35
Total health care expenditures as % of GDP in EU member states.....	36
Obstetrics definitions.....	37
Sources.....	38
Further information.....	39

Symbols used in the tables:

Zero or no applicable	-
Data not available	...

Note. For Estonia, Latvia and Lithuania the number of inhabitants for 2000-2011 has been recalculated according to the Population and Housing Census 2011. For Lithuania the number of births for 2000-2011 has been recalculated due to changes in registration methodology (newborns of emigrants have been eliminated).

Age-standardized death rates are calculated using the 2013 European Standard Population.

Preface

“Health in the Baltic Countries 2013” is the twenty second edition of the series and is aimed at providing a basis for the comparison of health statistics of the three Baltic States – namely Estonia, Latvia and Lithuania.

The publication is targeted at health professionals, policy and opinion formers, those involved in research, students of health and any of the general public interested in the health of their fellow citizens.

The most important sources of data for this publication were the annual statistical reports of the various medical institutions as well as health databases and registries. Some data was taken from official publications and the web pages of the national statistics offices of the Baltic States. *The Health for All database* of the World Health Organisation was used as sources of information for tables containing data from other European countries.

Resident population on 01.01.2014

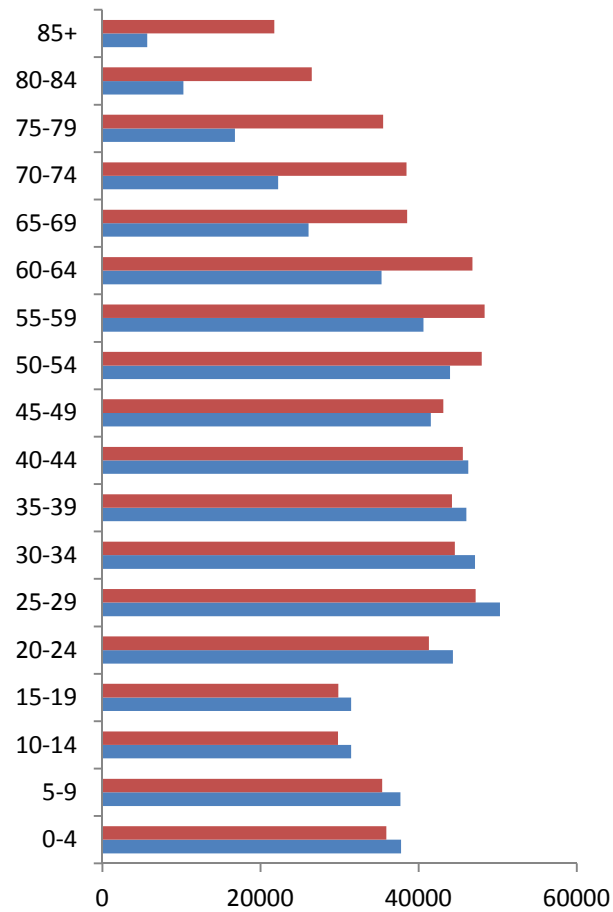
	Estonia	Latvia	Lithuania
Population (thousand)	1315.8	2001.5	2957.7
Per 1 km ²	30.3	31.0	45.3
Urban (thousand)	898.5	1357.7	1981.9
%	68.3	67.8	67.0
Rural (thousand)	417.3	643.8	975.8
%	31.7	32.2	33.0
Males (thousand)	614.9	917.0	1362.4
%	46.7	45.8	46.1
Females (thousand)	700.9	1084.4	1595.3
%	53.3	54.2	53.9
Below working age (%)	16.7	14.7	15.8
Working age (%)	63.0	62.6	61.8
Above working age (%)	20.3	22.7	22.4
Working age			
Males	16-63	15-61	16-62 y.10m.
Females	16-62	15-61	16-60 y.8m.

General data

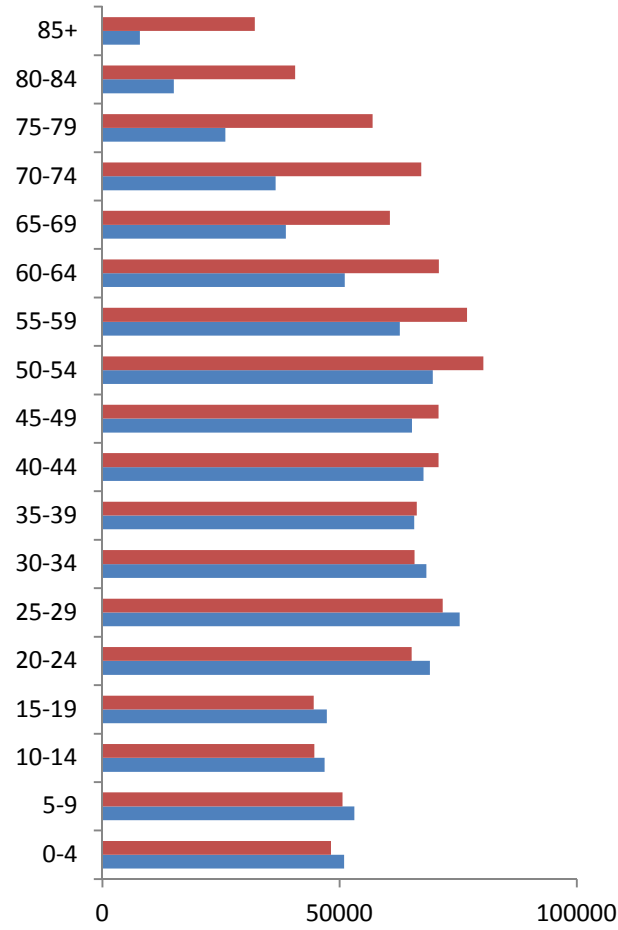
	Estonia	Latvia	Lithuania
Official name of the state	Republic of Estonia (Eesti Vabariik)	Republic of Latvia (Latvijas Republika)	Republic of Lithuania (Lietuvos Respublika)
Independence Day	24 February (1918)	18 November (1918)	16 February (1918)
Governing body of the state	Parliament (Riigikogu), 101 members, elected for a period of 4 years	Parliament (Saeima), 100 members, elected for a period of 4 years	Parliament (Seimas), 141 members, elected for a period of 4 years
Governmental structure	Republic, the President is elected for the period of 5 years	Republic, the President is elected for the period of 4 years	Republic, the President is elected for the period of 5 years
Area (thousand km ²)	45.2	64.6	65.3
Major islands	Saaremaa, 2671 km ² Hiiumaa, 989 km ² Muhu, 198 km ²	-	-
Major rivers	Võhandu, 162 km (through lake Tamula) Pärnu, 144 km Põltsamaa, 135 km	Daugava, 1005 km Gauja, 452 km Venta, 346 km	Nemunas, 937.4 km Neris, 509.5 km Venta, 346 km
Major lakes	Peipsi, 3555 km ² (in Estonia 1529 km ²) Võrtsjärv, 271 km ² Narva veehoidla (artificial lake) 191 km ² (in Estonia 38 km ²)	Lubāns, 80.7 km ² Rāzna, 57.6 km ² Engure, 40.5 km ²	Drūkšiai, 44.8 km ² Dysnai, 24.4 km ² Dusia, 23.3 km ²
The highest point	Suur Munamägi, 318 m	Gaiziņkalns, 311.6 m	Juozapinė, 293.6 m
Average daily temperature in January 2013	- 5.2° C	- 6.2° C	- 6.5° C
Average daily temperature in July 2013	+ 17.7° C	+ 17.8° C	+ 18.1° C
Average daily temperature 2013	+ 6.8° C	+ 7.0° C	+ 7.4° C
Administrative units at the beginning of 2014	15 counties, 215 administrative units with local governments, incl. 30 cities, 185 rural municipalities	9 cities, 110 counties	10 counties, 60 municipalities, 103 cities and towns
Capital, resident population (thousand) at the beginning of 2014	Tallinn 411.1	Riga 643.4	Vilnius 529.0
State language	Estonian	Latvian	Lithuanian
Currency	Since 2011 Euro=100 cents 1 EUR = 15.6466 EEK	Since 2014 Euro=100 cents 1 EUR = 0.7028 LVL	Since 2015 Euro=100 cents 1 EUR = 3.4528 LTL

Population by age at the beginning of 2014

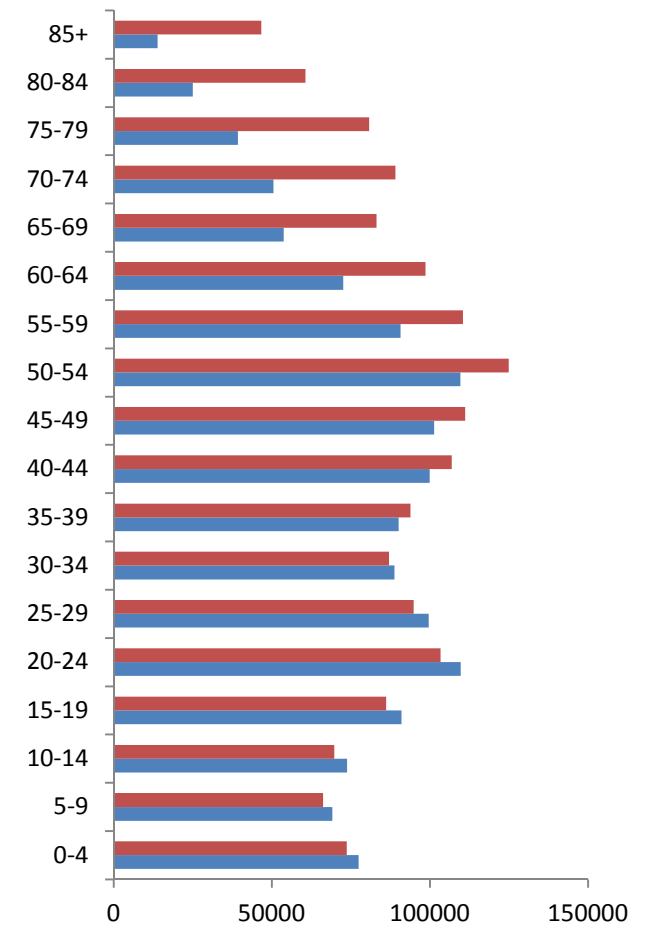
Estonia



Latvia



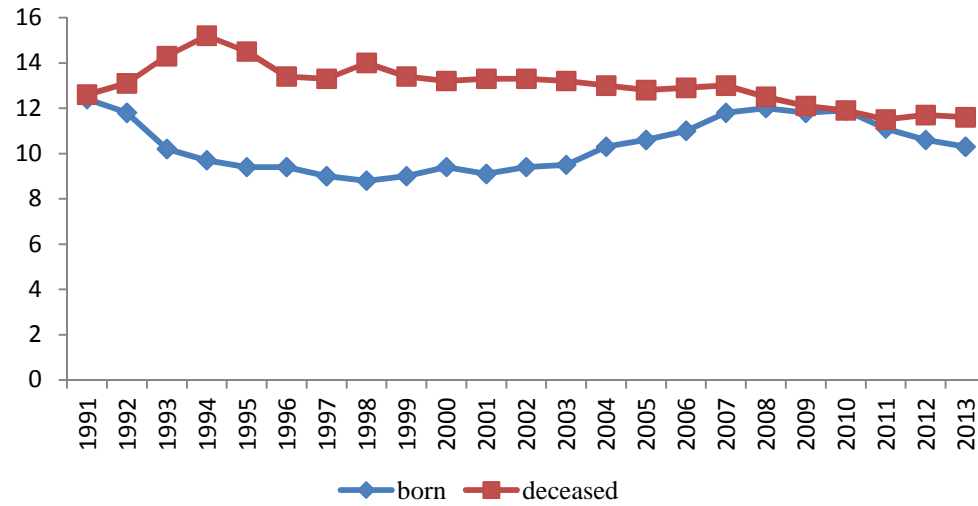
Lithuania



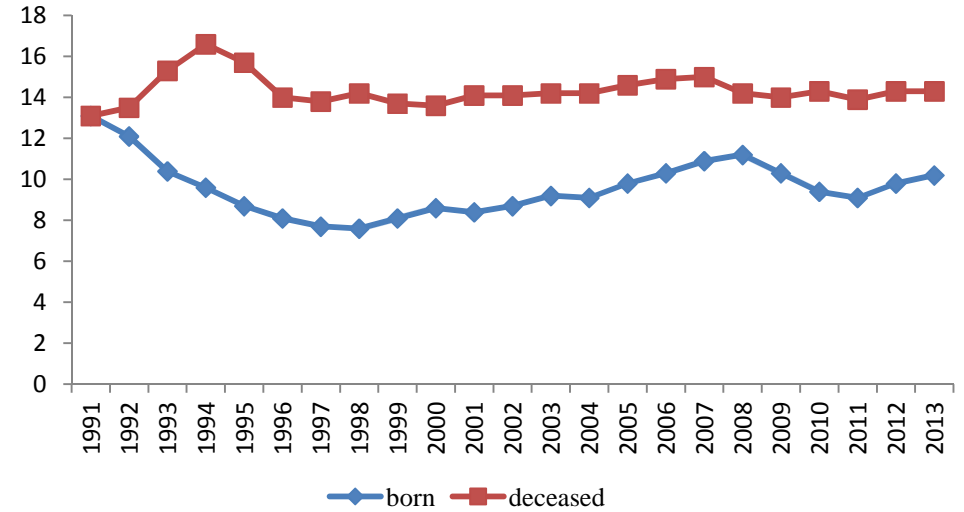
Female Male

Trends in demographics indicators
Per 1000 population

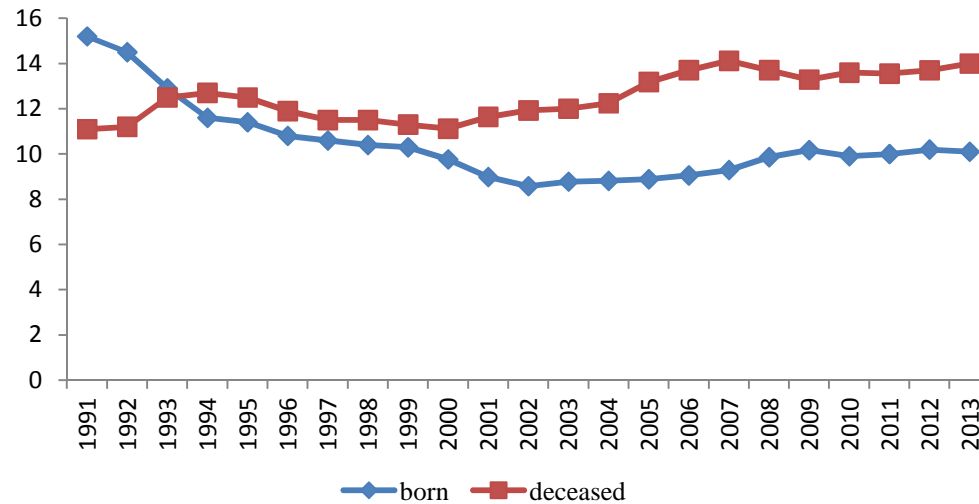
Estonia



Latvia



Lithuania



Resident population by age and gender at 01.01.2014

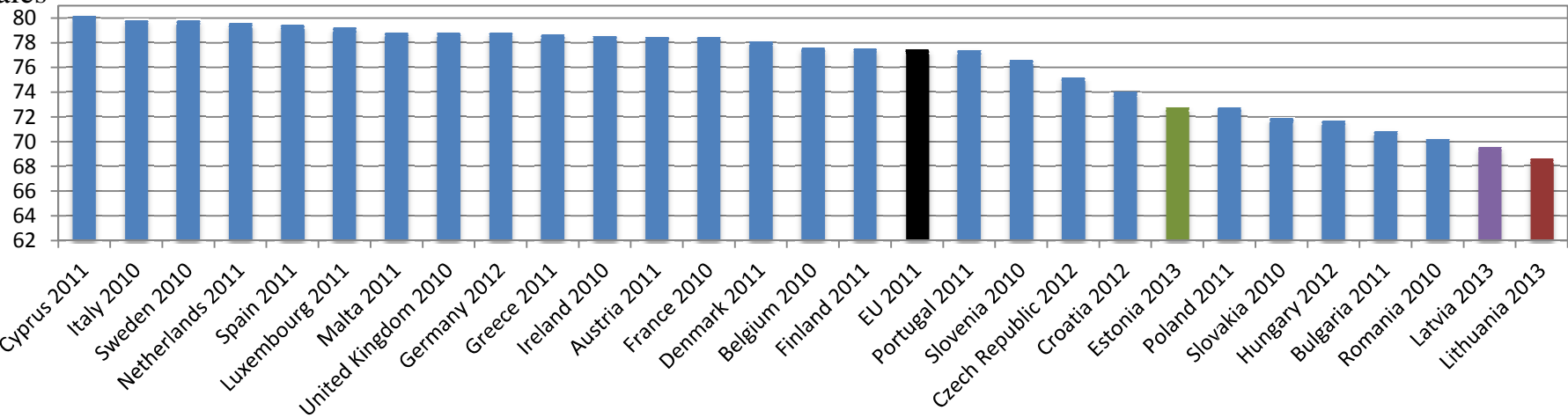
	Estonia						Latvia						Lithuania					
	Total		Males		Females		Total		Males		Females		Total		Males		Females	
	Number	%	Number	%	Number	%	Number	%	Number	%	Number	%	Number	%	Number	%	Number	%
Total	1315819	100	614919	100	70090	100	2001468	100	917045	100	1084423	100	2943472	100	1355995	100	1587477	100
0-4	73673	5.6	37776	6.1	35897	5.1	99095	5.0	50938	5.6	48157	4.4	151102	5.1	77416	5.7	73686	4.6
5-9	73072	5.6	37680	6.1	35392	5.0	103729	5.2	53083	5.8	50646	4.7	135421	4.6	69179	5.1	66242	4.2
10-14	61283	4.7	31460	5.1	29823	4.3	91560	4.6	46860	5.1	44700	4.1	143565	4.9	73828	5.4	69737	4.4
15-19	61311	4.7	31459	5.1	29852	4.3	91835	4.6	47317	5.2	44518	4.1	177196	6.0	91002	6.7	86194	5.4
20-24	85651	6.5	44345	7.2	41306	5.9	134223	6.7	69017	7.5	65206	6.0	213059	7.2	109709	8.1	103350	6.5
25-29	97499	7.4	50299	8.2	47200	6.7	147024	7.3	75305	8.2	71719	6.6	194446	6.6	99565	7.3	94881	6.0
30-34	91694	7.0	47114	7.7	44580	6.4	134101	6.7	68307	7.4	65794	6.1	175847	6.0	88738	6.5	87109	5.5
35-39	90268	6.9	46040	7.5	44228	6.3	132003	6.6	65705	7.2	66298	6.1	183913	6.2	90094	6.6	93819	5.9
40-44	91851	7.0	46267	7.5	45584	6.5	138512	6.9	67661	7.4	70851	6.5	206794	7.0	99872	7.4	106922	6.7
45-49	84690	6.4	41553	6.8	43137	6.2	136112	6.8	65271	7.1	70841	6.5	212480	7.2	101313	7.5	111167	7.0
50-54	91948	7.0	43966	7.1	47982	6.8	150000	7.5	69665	7.6	80335	7.4	234530	8.0	109600	8.1	124930	7.9
55-59	88964	6.8	40624	6.6	48340	6.9	139610	7.0	62715	6.8	76895	7.1	201166	6.8	90684	6.7	110482	7.0
60-64	82132	6.2	35311	5.7	46821	6.7	122049	6.1	51120	5.6	70929	6.5	171214	5.8	72578	5.4	98636	6.2
65-69	64621	4.9	26084	4.2	38537	5.5	99251	5.0	38658	4.2	60593	5.6	136848	4.6	53716	4.0	83132	5.2
70-74	60720	4.6	22243	3.6	38477	5.5	103689	5.2	36487	4.0	67202	6.2	139514	4.7	50473	3.7	89041	5.6
75-79	52273	4.0	16775	2.7	35498	5.1	82915	4.1	25937	2.8	56978	5.3	120058	4.1	39275	2.9	80783	5.1
80-84	36746	2.8	10251	1.7	26495	3.8	55708	2.8	15089	1.6	40619	3.7	85674	2.9	25030	1.8	60644	3.8
85+	27423	2.1	5672	0.9	21751	3.1	40052	2.0	7910	0.9	32142	3.0	60645	2.1	13923	1.0	46722	2.9

Nativity, mortality and natural increase per 1000 population

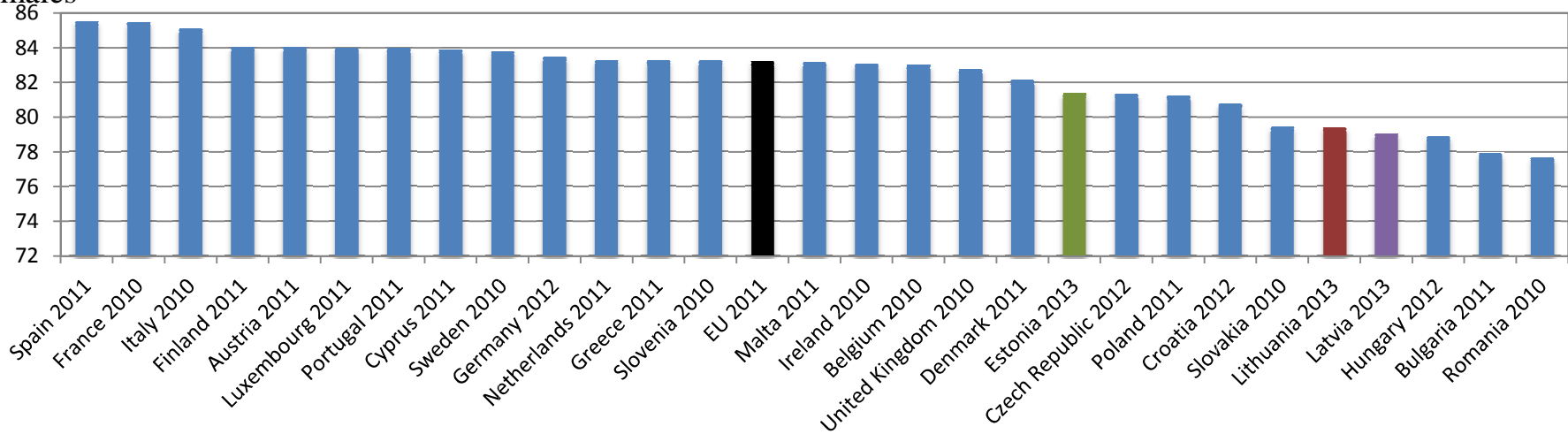
Years	Estonia			Latvia			Lithuania		
	Nativity	Mortality	Natural increase	Nativity	Mortality	Natural increase	Nativity	Mortality	Natural increase
1985	15.5	12.7	2.8	15.4	13.2	2.2	16.5	11.1	5.4
1990	14.2	12.5	1.8	14.2	13.1	1.1	15.4	10.8	4.6
1991	12.4	12.6	-0.2	13.1	13.1	0.0	15.2	11.1	4.1
1992	11.8	13.1	-1.4	12.1	13.5	-1.4	14.5	11.2	3.3
1993	10.2	14.3	-4.0	10.4	15.3	-4.9	12.9	12.5	0.4
1994	9.7	15.2	-5.5	9.6	16.6	-7.0	11.6	12.7	-1.1
1995	9.4	14.5	-5.1	8.7	15.7	-7.0	11.4	12.5	-1.1
1996	9.4	13.4	-4.1	8.1	14.0	-5.9	10.8	11.9	-1.1
1997	9.0	13.3	-4.3	7.7	13.8	-6.1	10.6	11.5	-0.9
1998	8.8	14.0	-5.3	7.6	14.2	-6.6	10.4	11.5	-1.1
1999	9.0	13.4	-4.4	8.1	13.7	-5.6	10.3	11.3	-1.0
2000	9.4	13.2	-3.8	8.6	13.6	-5.0	9.8	11.1	-1.4
2001	9.1	13.3	-4.2	8.4	14.1	-5.7	9.0	11.6	-2.7
2002	9.4	13.3	-3.9	8.7	14.1	-5.4	8.6	11.9	-3.3
2003	9.5	13.2	-3.7	9.2	14.2	-5.0	8.8	12.0	-3.2
2004	10.3	13.0	-2.7	9.1	14.2	-5.1	8.8	12.2	-3.4
2005	10.6	12.8	-2.2	9.8	14.6	-4.8	8.9	13.2	-4.3
2006	11.0	12.9	-1.8	10.3	14.9	-4.6	9.1	13.7	-4.7
2007	11.8	13.0	-1.2	10.9	15.0	-4.1	9.3	14.1	-4.8
2008	12.0	12.5	-0.5	11.2	14.2	-3.0	9.9	13.7	-3.8
2009	11.8	12.1	-0.2	10.3	14.0	-3.7	10.2	13.3	-3.1
2010	11.9	11.9	0.0	9.4	14.3	-4.9	9.9	13.6	-3.7
2011	11.1	11.5	-0.4	9.1	13.9	-4.8	10.0	13.6	-3.6
2012	10.6	11.7	-1.1	9.8	14.3	-4.5	10.2	13.7	-3.5
2013	10.3	11.6	-1.3	10.2	14.3	-4.1	10.1	14.0	-3.9

Life expectancy at birth in EU member states

Males

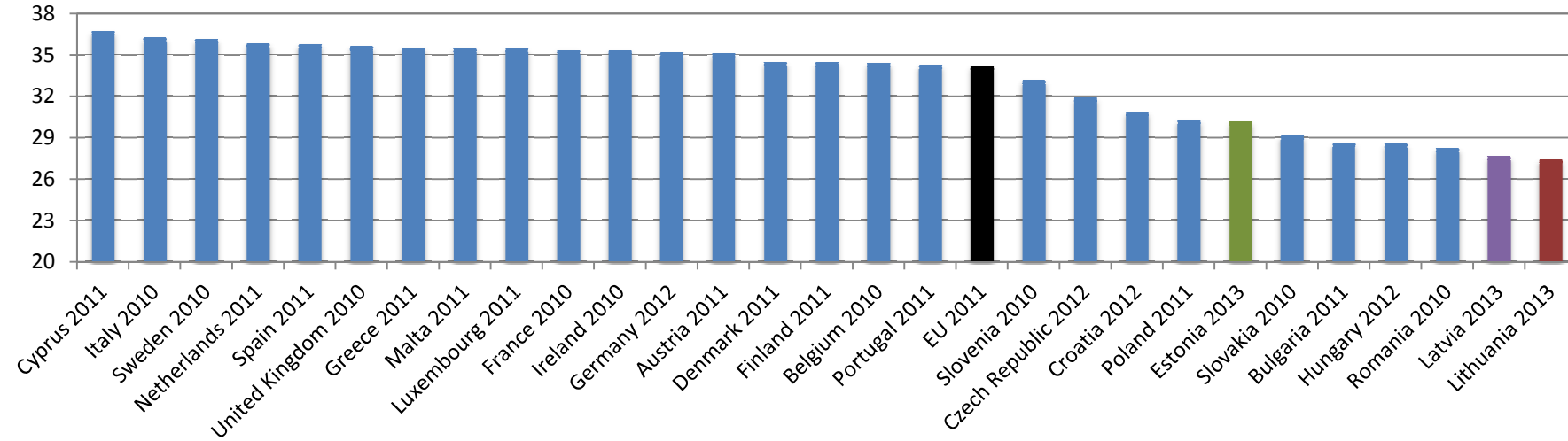


Females

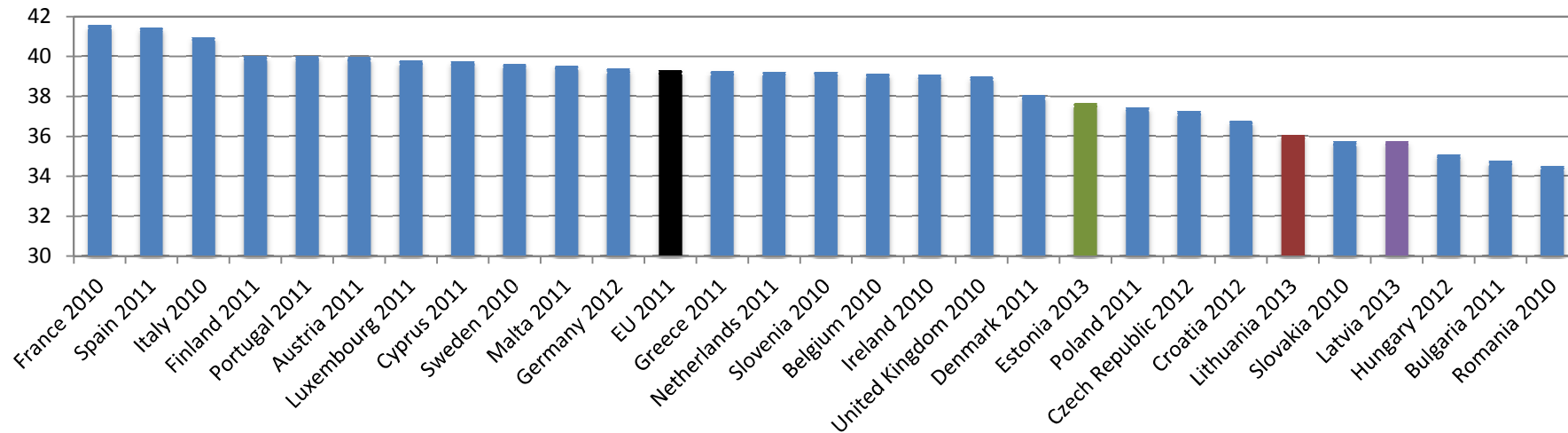


Life expectancy at 45 years of age in EU member states

Males



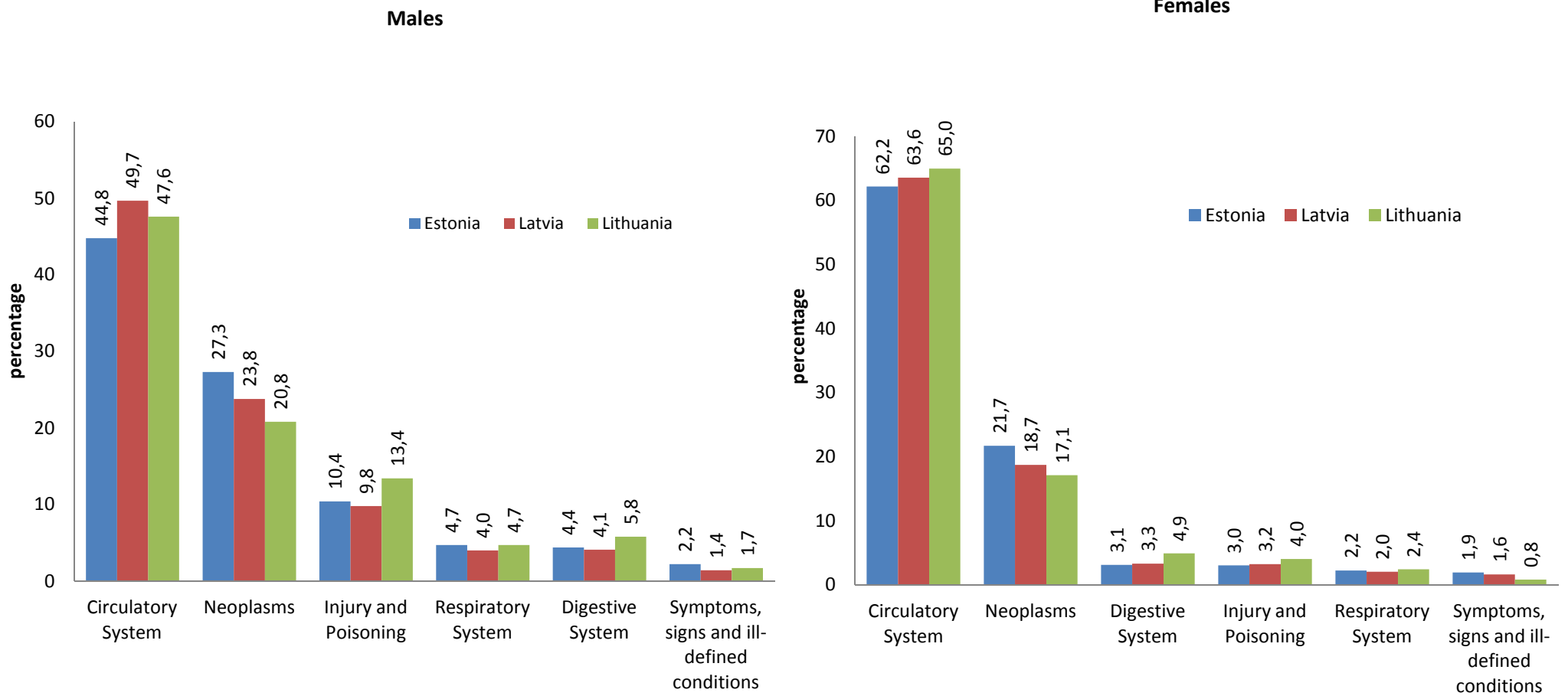
Females



Deaths by cause per 100 000 population in 2013

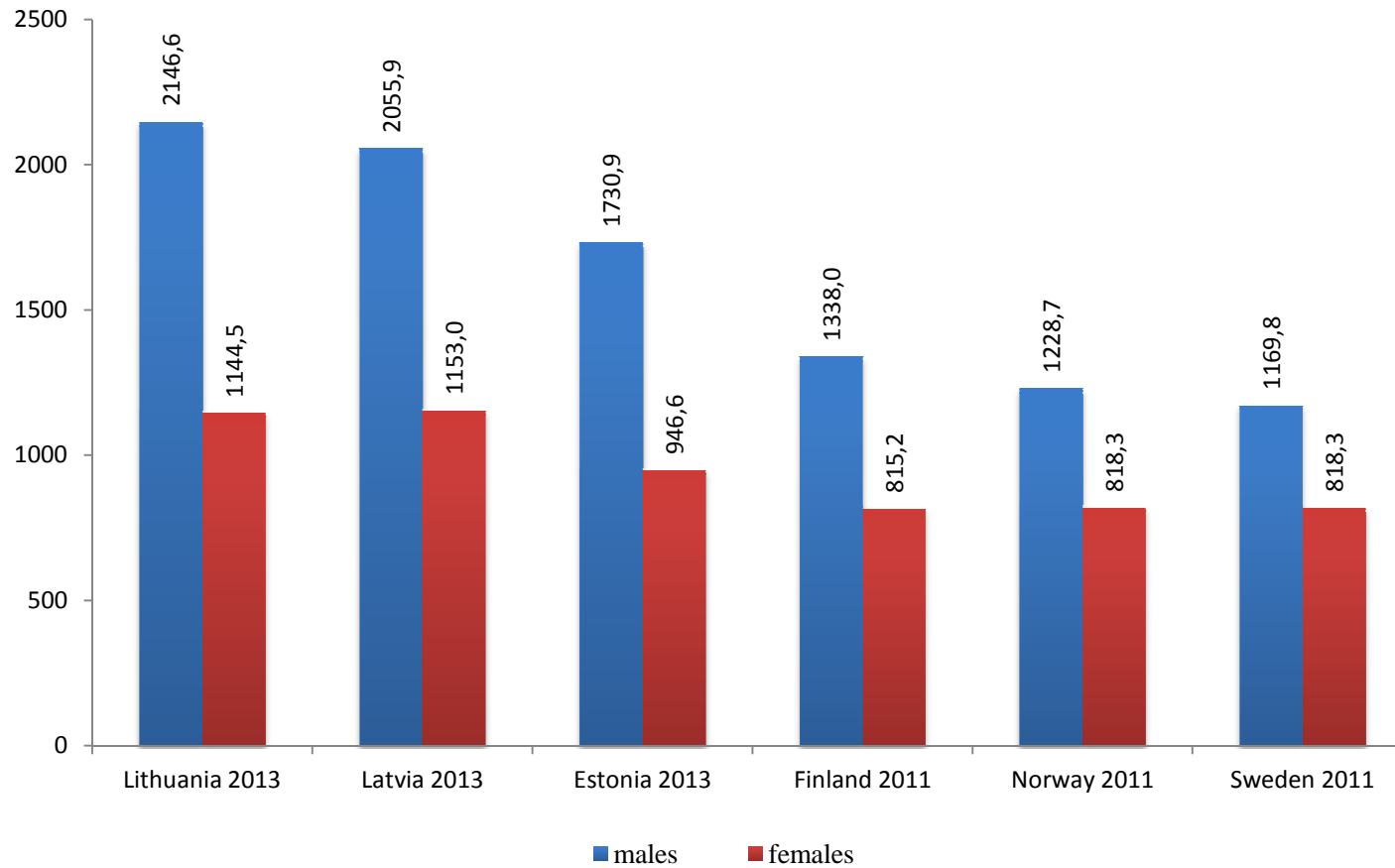
Causes of death	Estonia			Latvia			Lithuania		
	Total	Males	Females	Total	Males	Females	Total	Males	Females
Certain infectious and parasitic diseases	8.7	13.0	5.0	17.6	22.8	13.2	21.5	29.6	14.5
Neoplasms	284.3	324.9	248.7	300.4	348.8	259.5	271.4	323.5	226.8
Diseases of the blood and blood-forming organs and certain disorders involving the immune mechanisms	1.5	0.5	2.4	1.2	0.7	1.7	1.3	1.0	1.6
Endocrine, nutritional and metabolic diseases	13.1	11.2	14.7	25.1	18.3	30.8	11.4	11.0	11.7
Mental and behavioural disorders	8.3	11.7	5.3	16.8	18.1	15.7	3.5	2.6	4.3
Diseases of the nervous system and sensory organs	22.2	23.1	21.4	15.7	16.2	15.2	20.2	21.7	18.9
Diseases of the circulatory system	629.0	534.0	712.2	812.8	728.3	884.1	789.8	726.6	843.9
Diseases of the respiratory system	39.2	55.9	24.6	41.3	57.9	27.2	49.7	72.0	30.7
Diseases of the digestive system	43.3	52.5	35.3	52.3	59.6	46.1	75.5	88.7	64.3
Diseases of the skin and subcutaneous tissue	1.1	0.8	1.4	1.8	1.0	2.5	1.5	1.6	1.4
Diseases of the musculoskeletal system and connective tissue	3.4	1.9	4.7	4.7	3.8	5.5	3.1	2.1	3.9
Diseases of the genitourinary system	9.6	9.6	9.7	19.3	19.7	18.9	10.7	10.3	11.0
Pregnancy, childbirth and puerperium	-	-	0.1	-	-	0.2	-	-	0.1
Certain conditions originating in perinatal period	0.9	1.0	0.9	2.5	2.7	2.3	1.4	2.0	0.9
Congenital malformations, deformations and chromosomal abnormalities	1.7	1.8	1.7	2.2	2.7	1.7	2.7	3.1	2.3
Symptoms, signs and abnormal clinical and laboratory findings, not elsewhere classified	23.8	26.2	21.8	21.6	20.8	22.3	17.5	25.2	10.8
Injury, poisoning and certain other consequences of external causes	76.0	123.8	34.2	89.5	143.5	43.9	122.2	204.7	51.8
TOTAL	1166.1	1191.9	1144.1	1424.8	1464.9	1390.9	1403.4	1525.7	1298.9

Main causes of death in 2013

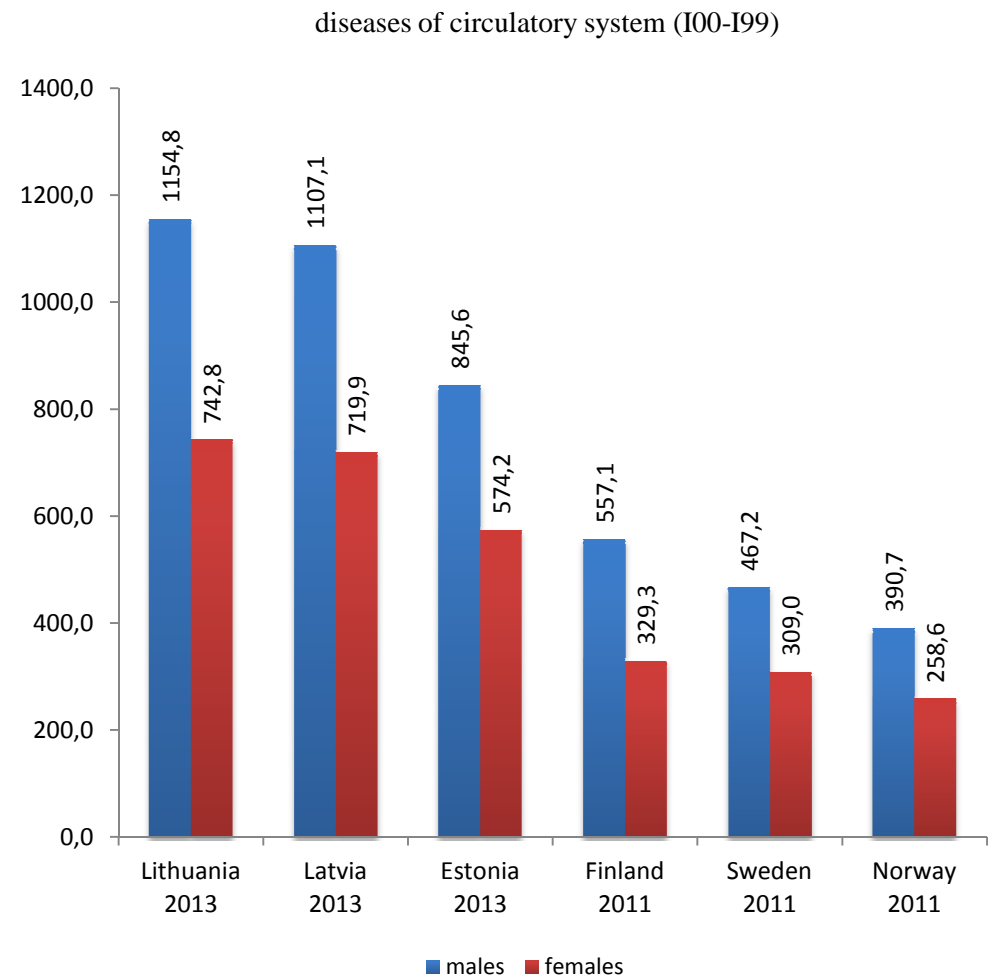
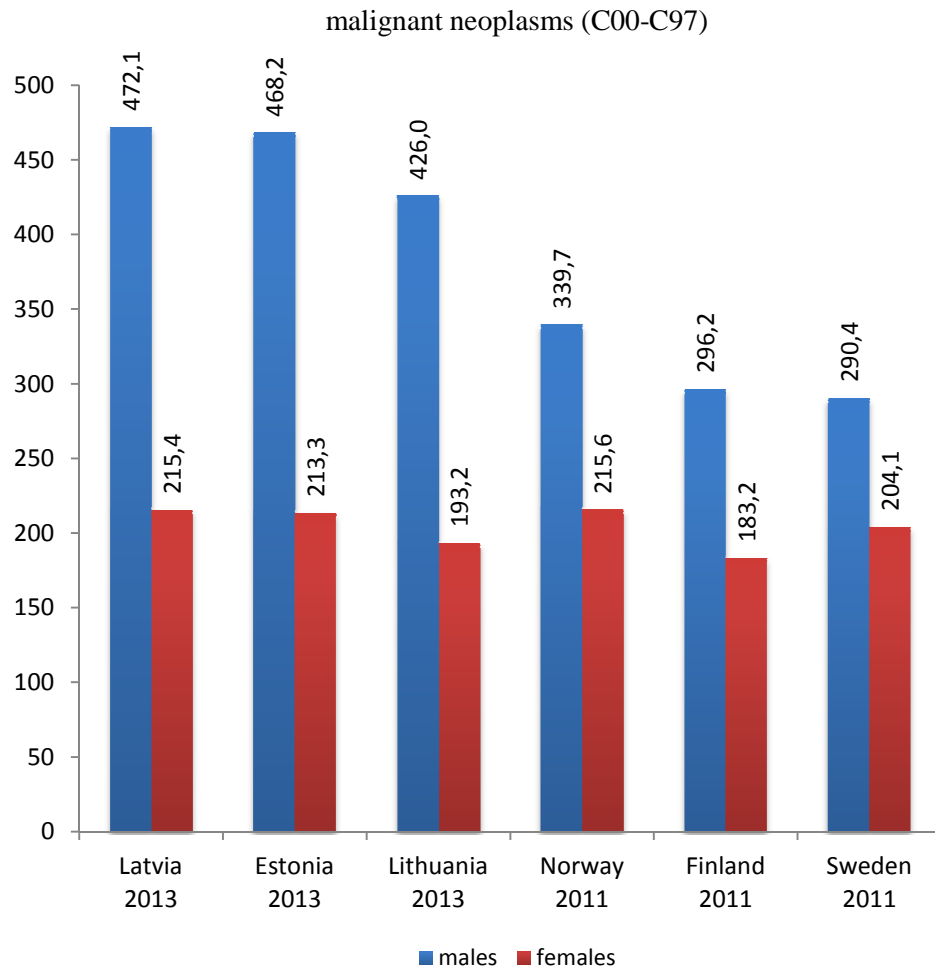


Age-standardised death rates
(per 100 000 updated European standard population)

All causes of death (A00-Y89) excluding S00-T98

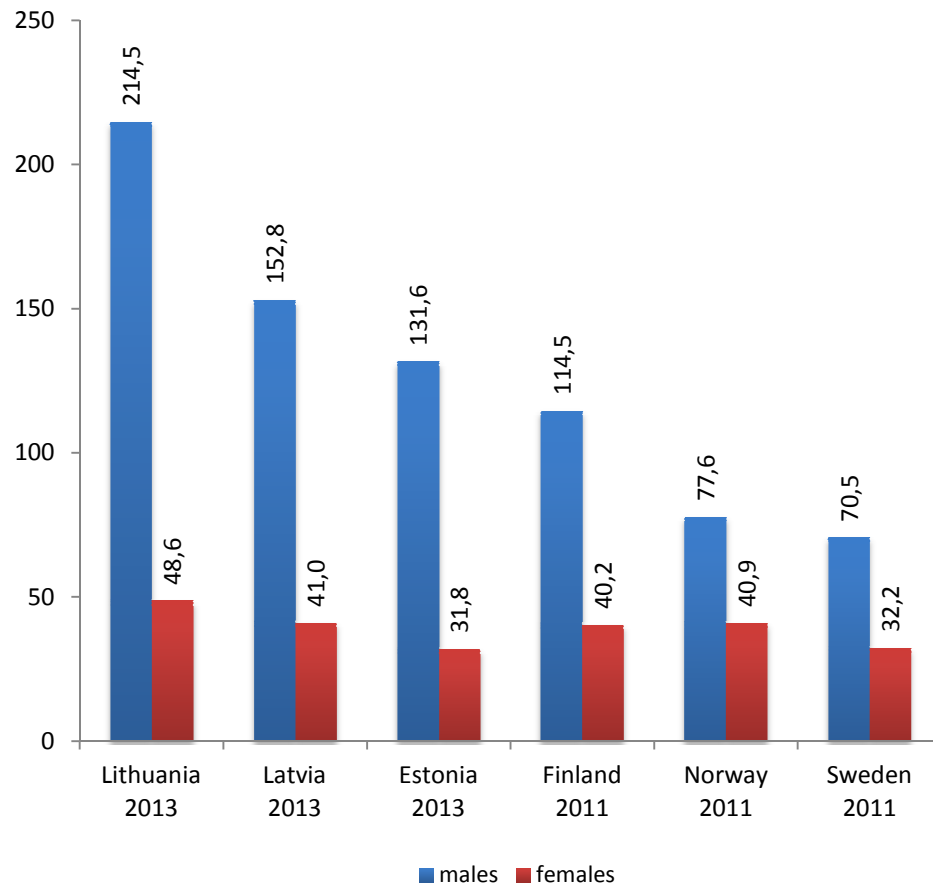


Age-standardised death rates
(per 100 000 updated European standard population)

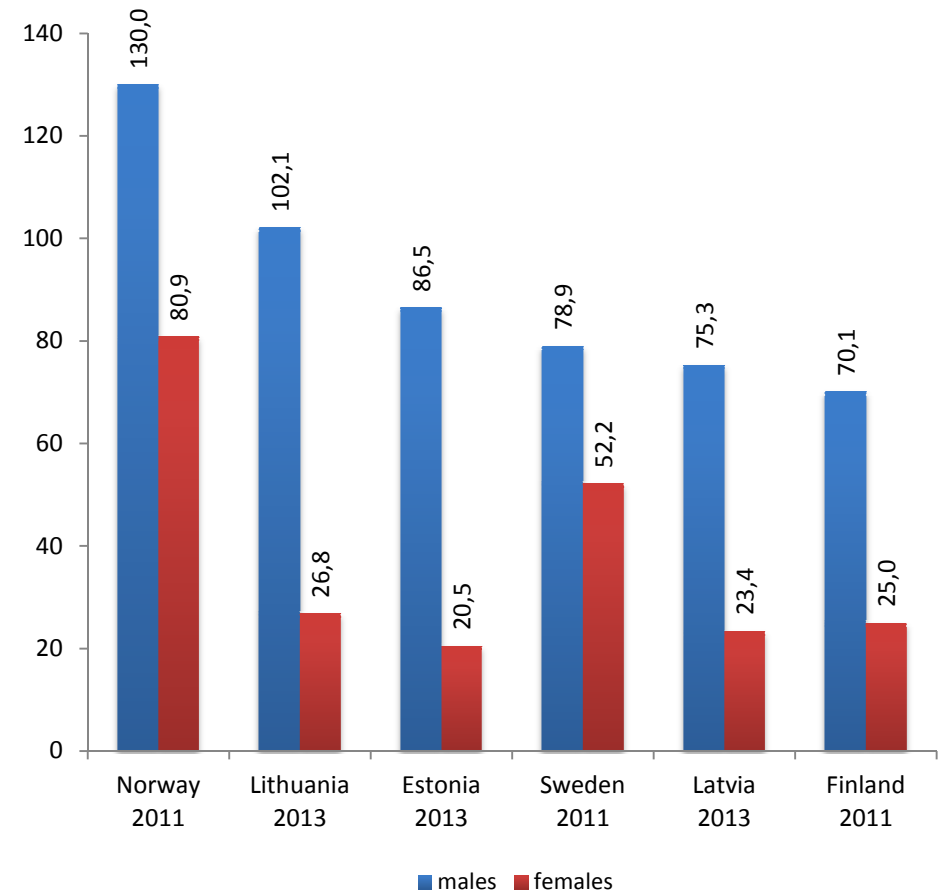


Age-standardised death rates
(per 100 000 updated European standard population)

external causes of morbidity and mortality (V01-V99)



diseases of respiratory system (J00-J99)

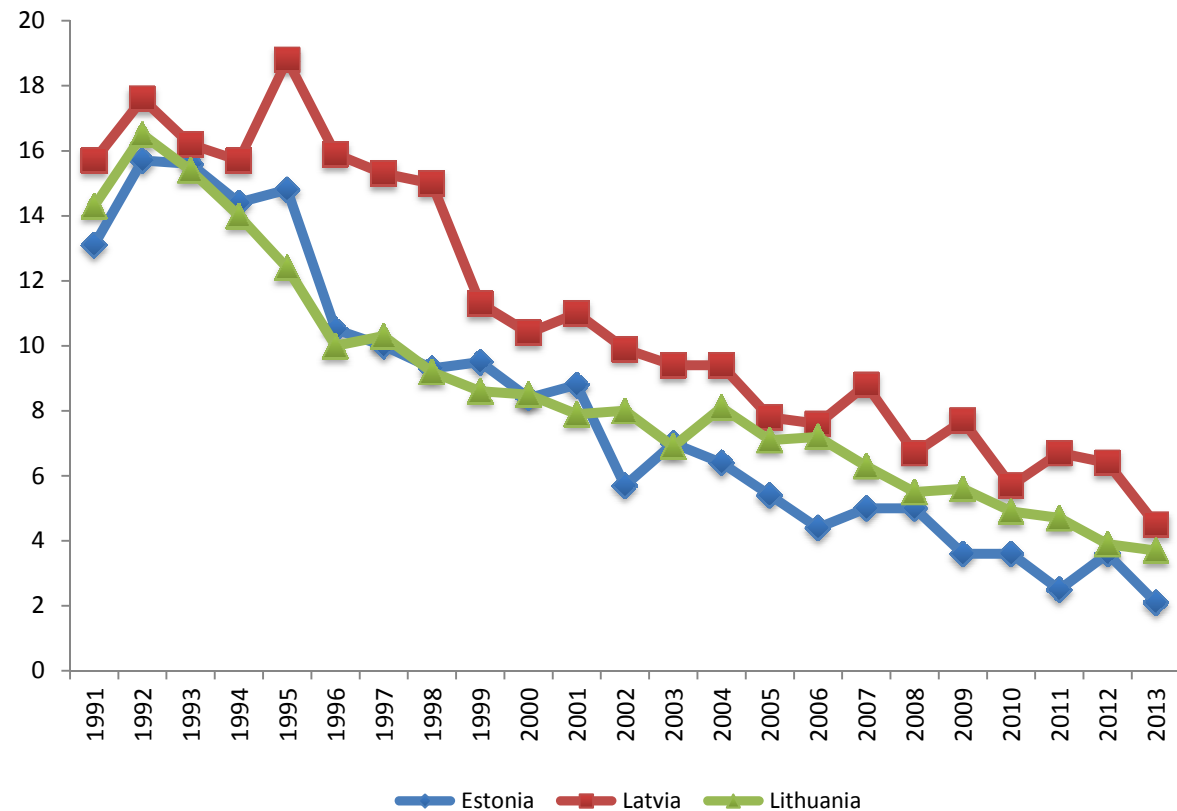


Selected causes of deaths per 100 000 population in 2013

Causes of death	ICD-10 codes	Estonia			Latvia			Lithuania		
		Total	Males	Females	Total	Males	Females	Total	Males	Females
Tuberculosis	A15-A19	1.5	2.6	0.6	4.1	6.6	2.0	7.1	12.3	2.6
AIDS	B20-B24	3.9	6.3	1.9	5.5	7.1	4.1	0.9	1.7	0.2
Stomach cancer	C16	22.1	27.5	17.4	24.1	30.3	18.9	21.7	29.1	15.5
Colon cancer	C18	20.5	19.8	21.1	18.8	16.2	21.1	17.0	18.3	15.8
Rectum cancer	C19-C21	14.5	14.3	14.7	15.0	16.8	13.4	14.5	16.6	12.8
Trachea, bronchus and lung cancer	C33-C34	49.9	78.6	24.8	49.4	84.6	19.7	44.3	77.7	15.7
Breast cancer	C50	16.2	0.6	29.8	21.7	0.3	39.8	19.2	0.3	35.4
Cervix uteri cancer	C53	-	-	9.0	-	-	12.1	-	-	11.3
Prostate cancer	C61	-	42.1	-	-	39.9	-	-	38.8	-
Diabetes	E10-E14	11.0	9.9	12.0	22.8	16.4	28.1	10.4	9.9	10.8
Ischaemic heart disease	I20-I25	268.8	244.5	290.1	411.9	391.1	429.6	511.3	469.2	547.2
of which myocardial infarction	I21-I22	37.3	39.0	35.7	60.2	67.5	54.1	44.1	52.3	37.0
Cerebrovascular diseases	I60-I69	91.7	73.1	107.9	242.8	177.8	297.8	199.4	162.6	230.8
Atherosclerosis	I70	10.8	6.8	14.4	14.0	13.1	14.8	5.1	6.8	3.7
Pneumonia	J12-J18	17.6	24.9	11.2	19.3	25.4	14.2	19.9	28.1	13.0
Chronic bronchitis, asthma	J41-J46	17.7	25.3	11.0	15.4	24.5	7.7	26.2	38.9	15.3
Alcoholic liver disease	K70	13.1	20.1	7.0	6.8	9.9	4.1	15.9	24.0	8.9
Fibrosis and cirrosis of liver	K74	5.3	7.5	3.4	10.9	13.7	8.5	14.9	18.6	11.8
Transport accidents	V01-V99	7.1	10.6	4.1	9.6	15.8	4.4	10.7	17.6	4.8
Accidental falls	W00-W19	8.3	13.6	3.6	8.9	13.6	5.0	12.8	18.3	8.0
Accidental drowning and submersion	W65-W74	3.0	4.5	1.7	6.5	11.8	2.0	6.7	11.9	2.3
Exposure to excessive natural cold	X31	4.2	7.0	1.9	7.2	12.1	2.9	10.0	15.7	5.1
Accidental poisoning by alcohol	X45	8.3	14.0	3.4	5.6	8.6	3.1	8.9	15.9	2.9
Intentional self-harm	X60-X84	16.5	27.8	6.7	19.0	34.8	5.6	36.7	65.1	12.4
Assault	X85-Y09	3.9	5.5	2.6	5.9	9.2	3.1	4.9	7.6	2.6

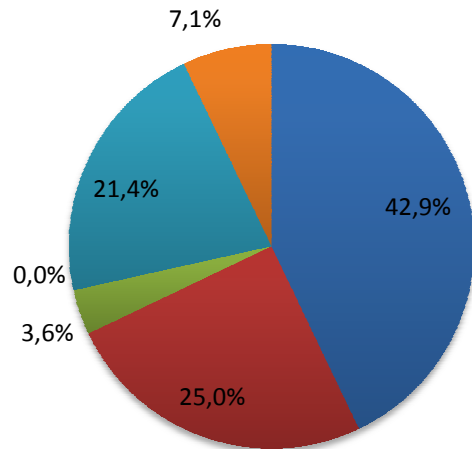
Infant mortality per 1000 live births

Years	Estonia	Latvia	Lithuania
1975	18.2	20.3	19.6
1980	17.1	15.4	14.4
1985	14.1	13.0	14.2
1990	12.3	13.7	10.3
1991	13.1	15.7	14.3
1992	15.7	17.6	16.5
1993	15.6	16.2	15.4
1994	14.4	15.7	14.0
1995	14.8	18.8	12.4
1996	10.5	15.9	10.0
1997	10.0	15.3	10.3
1998	9.3	15.0	9.2
1999	9.5	11.3	8.6
2000	8.4	10.4	8.5
2001	8.8	11.0	7.9
2002	5.7	9.9	8.0
2003	7.0	9.4	6.9
2004	6.4	9.4	8.1
2005	5.4	7.8	7.1
2006	4.4	7.6	7.2
2007	5.0	8.8	6.3
2008	5.0	6.7	5.5
2009	3.6	7.7	5.6
2010	3.3	5.7	4.9
2011	2.5	6.7	4.7
2012	3.6	6.4	3.9
2013	2.1	4.5	3.7



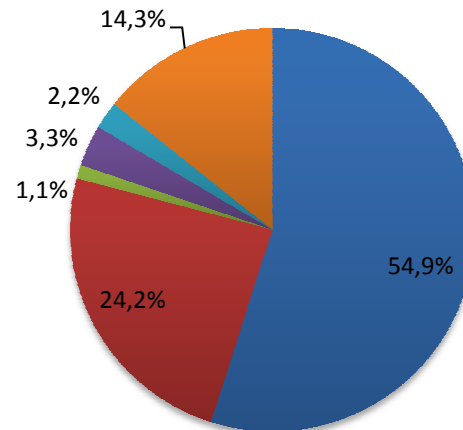
Structure of infant mortality in percentage in 2013

Estonia



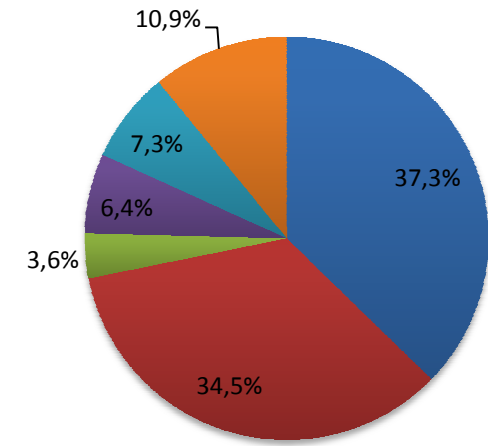
- Perinatal conditions
- Congenital anomalies
- Respiratory system
- Infectious & parasitic
- Injury & poisoning
- Others

Latvia



- Perinatal conditions
- Congenital anomalies
- Respiratory system
- Infectious & parasitic
- Injury & poisoning
- Others

Lithuania



- Perinatal conditions
- Congenital anomalies
- Respiratory system
- Infectious & parasitic
- Injury & poisoning
- Others

Infant mortality by cause per 10 000 live births in 2013

	Estonia		Latvia		Lithuania	
	Rate	%	Rate	%	Rate	%
Certain conditions originating in the perinatal period	8.9	42.9	24.7	54.9	13.7	37.3
Congenital malformations	5.2	25.0	10.9	24.2	12.7	34.5
Diseases of the respiratory system	0.7	3.6	0.5	1.1	1.3	3.6
Infectious and parasitic diseases	-	-	1.5	3.3	2.4	6.4
Injury, poisoning and other consequences of the external causes	4.4	21.4	1.0	2.2	2.7	7.3
Diseases of the nervous system and sensory organs	0.7	3.6	0.5	1.1	1.3	3.6
Diseases of the digestive system	0.7	3.6	-	-	-	-
Other causes	-	-	5.9	13.2	2.7	7.3
TOTAL	20.6	100	44.9	100	36.8	100

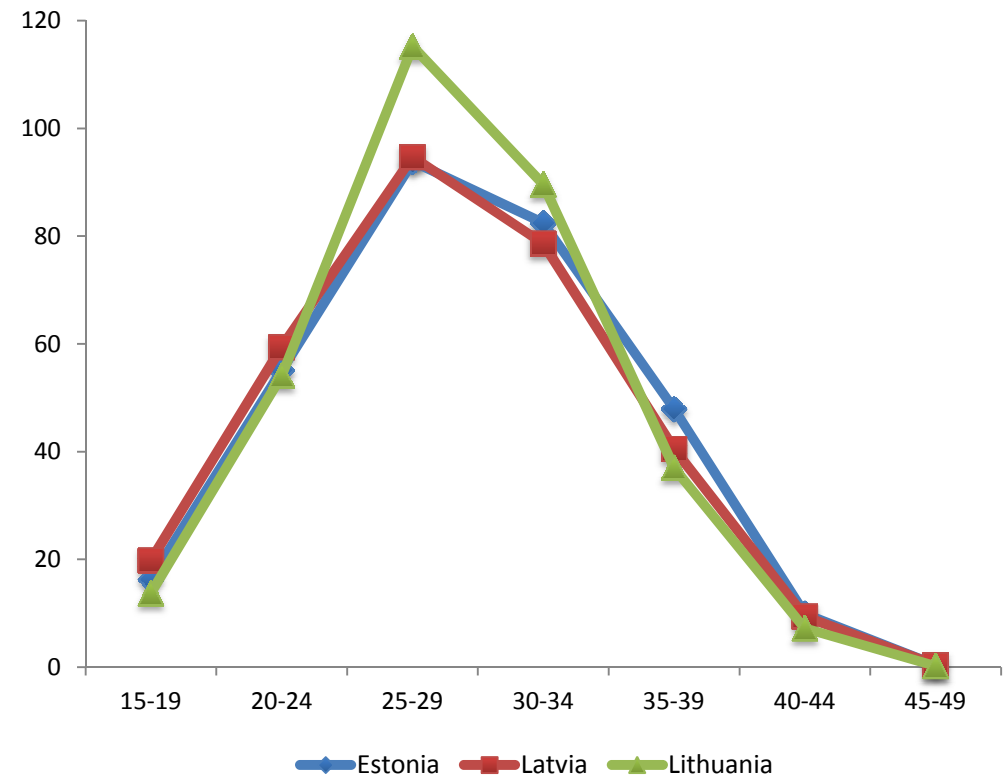
Perinatal, neonatal and maternal mortality in 2013

	Estonia	Latvia	Lithuania
Perinatal mortality per 1000 births	4.5	7.5	6.3
Stillbirth rate per 1000 births	3.8	5.7	4.8
Neonatal mortality per 1000 live births	1.2	2.6	2.1
Early neonatal mortality per 1000 live births	0.7	1.8	1.5
Maternal mortality per 100,000 live births	7.4	24.7	6.7
Standard perinatal mortality*	2.4	4.9	3.6
Standard stillbirth rate*	1.9	3.8	3.0

* Birth weight 1000 grams and more

Birth rates by age of mother in 2013
per 1000 females

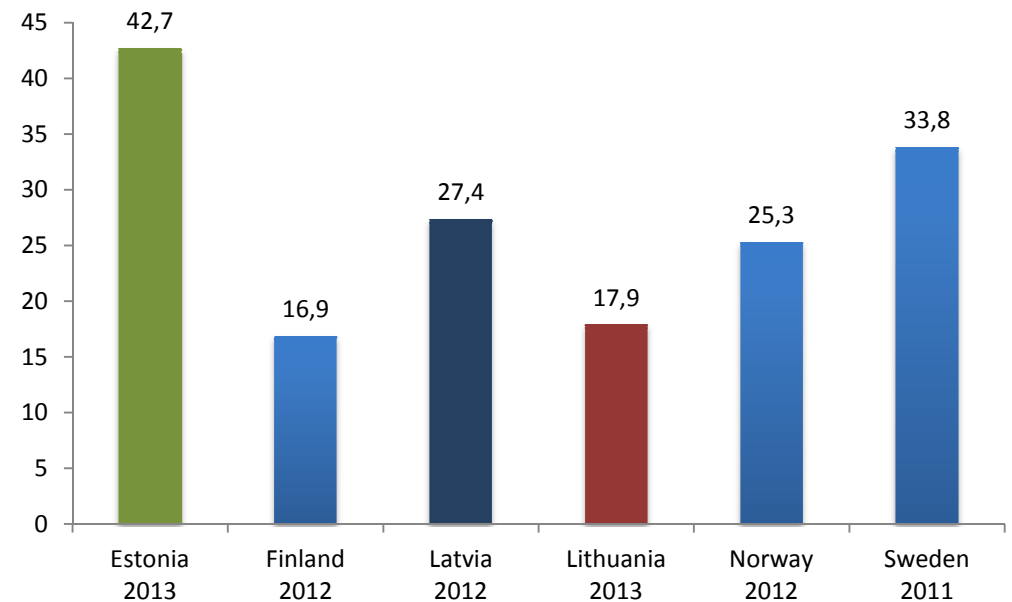
	Estonia	Latvia	Lithuania
Women aged 15-49	45.4	44.0	43.2
By specific age groups:			
15-19	16.3	19.8	13.7
20-24	55.1	59.4	54.1
25-29	93.8	94.7	115.2
30-34	82.4	78.6	89.6
35-39	47.9	40.5	37.0
40-44	9.9	9.4	7.2
45-49	0.4	0.4	0.2
Total fertility rate	1.52	1.52	1.59



Abortions in 2013

	Estonia	Latvia	Lithuania
Total abortions			
Total number	7606	8715	9150
Per 1000 women aged 15-49	25.5	18.9	13.2
Per 100 live births	56.2	43.0	30.6
Induced abortions			
Total number	5777	5557	5353
Per 1000 women aged 15-49	19.4	12.0	7.7
Per 100 live births	42.7	27.4	17.9
Percentage			
Spontaneous abortions	7.3	13.3	24.0
Legal abortions	73.4	62.0	57.0
Medical abortions	2.6	1.8	1.5
Other abortions	16.7	22.9	17.5

Induced abortions per 100 live births



Selected results of health behaviour survey in 2012, percentage

	Estonia, age group 16-64			Latvia, age group 15-64			Lithuania, age group 20-64		
	Total	Male	Female	Total	Male	Female	Total	Male	Female
Proportion of persons, who assessed their own health status to be good and reasonably good	50.9	47.2	53.7	50.2	54.6	46.8	49.7	49.1	50.0
Prevalence of overweight (BMI 25.0-29.9)	29.9	35.9	25.6	33.0	38.3	28.8	33.5	43.5	26.8
Prevalence of obesity (BMI \geq 30)	19.0	18.6	19.3	19.8	18.3	20.9	19.9	19.0	20.5
Proportion of daily smokers	26.0	36.2	18.3	33.9	54.2	17.6	20.5	32.7	12.3
Proportion of non-smokers	41.9	27.8	52.6	47.6	24.7	65.8	51.6	32.3	64.7
Proportion of persons eating fresh vegetables at least 3 days a week	52.3	43.8	58.4	56.5	48.2	63.2	62	54.1	67.1
Proportion of persons, who have leisure time physical exercise at least 30 min. on 4 and more days a week	14.5	13.9	14.8	14.3	15.8	13.1	28.9	31.2	27.4

Sources:

EE: National Institute of Health Development, Health Behavior among Estonian Adult Population 2012

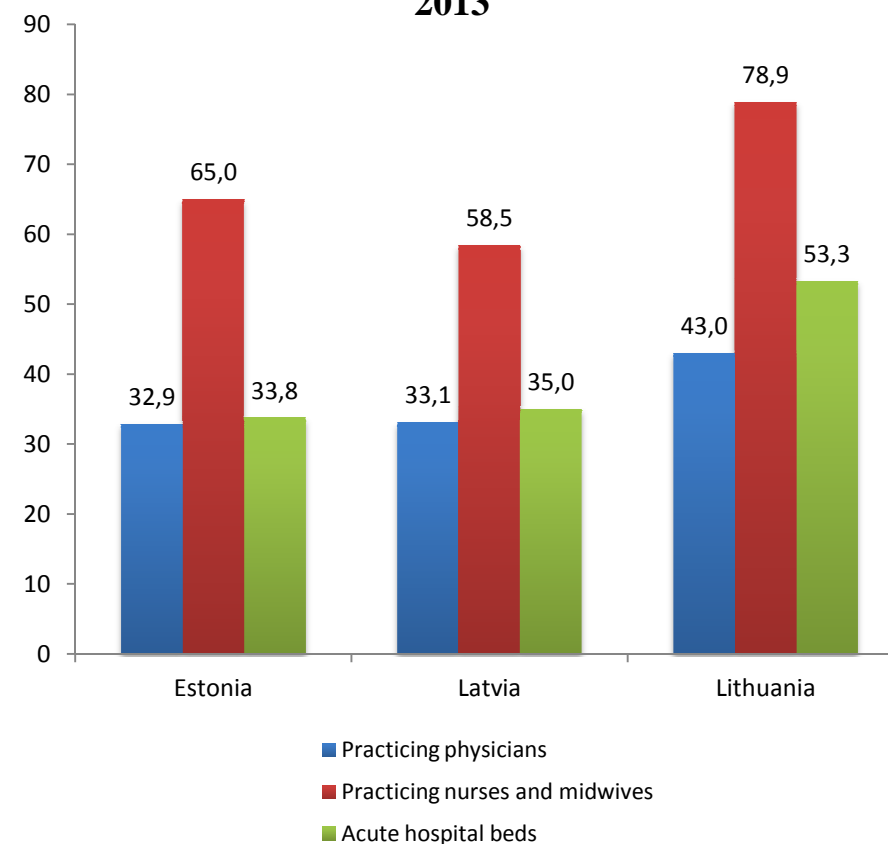
LV: The Centre for Disease Prevention and Control; Health Behavior among Latvian Adult Population 2012

LT: Kaunas Medical University, Health Behavior among Lithuanian Adult Population 2012

Health facilities in 2013

	Estonia	Latvia	Lithuania
Hospitals	61	65	148
excl. nursing hospitals	34	58	99
Acute ¹ hospitals	31	30	76
Hospital beds thousand	7.4	11.7	26.6
per 10 000 population	56.2	58.0	90.4
Hospital beds (excl. nursing) thousand	5.4	11.0	21.5
per 10 000 population	40.9	54.7	73.2
Acute¹ hospital beds thousand	4.4	7.0	15.7
per 10 000 population	33.8	35.0	53.3
Practicing physicians thousand	4.3	6.6	12.7
per 10 000 population	32.9	33.1	43.0
Practicing dentists thousand	1.2	1.5	2.7
per 10 000 population	9.0	7.3	9.1
Practicing nurses and midwives thousand	8.5	9.7	23.2
per 10 000 population	65.0	48.6	78.9
Hospital admissions thousand	240.1	377.0	744.5
per 100 population	18.2	18.7	25.2
Hospital admissions (excl. nursing) thousand	220.5	360.6	710.8
per 100 population	16.7	17.9	24.0
Acute¹ hospital admissions thousand	207.3	312.3	644.9
per 100 population	15.7	15.5	21.8
Number of hospital day cases thousands	61.3 ²	164.1	75.6
per 100 population	4.7 ²	8.2	2.6
Physicians' outpatient visits³ millions	8.3	12.6	24.0
per 1 inhabitant	6.3	6.2	8.1

Physicians, nursing professionals and acute hospital beds per 10 000 population in 2013



¹ Acute hospitals/beds/admissions – nursing, palliative care, geriatrics, rehabilitation, tuberculosis and psychiatric hospitals/beds/admissions are excluded; for Estonia - short-term (with ALOS up to 18 days) rehabilitation care beds are included.

² One day care case may include several bed days

³ Dentist visits are excluded

Practising physicians* by speciality at the end of 2013

	Estonia		Latvia		Lithuania	
	Number	Per 10 000 population	Number	Per 10 000 population	Number	Per 10 000 population
TOTAL	4327	32.9	6624	33.1	12650	43.0
of them:						
Family doctors / general practitioners	912	6.9	1313	6.6	1919	6.5
Internal medicine ¹	565	4.3	735	3.7	2083	7.1
Surgery ²	461	3.5	618	3.1	1238	4.2
Paediatrics	177	1.3	293	1.5	988	3.4
Gynaecology (including obstetrics)	289	2.2	408	2.0	636	2.2
Oncology	48	0.4	63	0.3	112	0.4
Otolaryngology	111	0.8	140	0.7	289	1.0
Ophthalmology	141	1.1	204	1.0	368	1.3
Anaesthesiology	283	2.2	349	1.7	697	2.4
Neurology	134	1.0	216	1.1	445	1.5
Psychiatry	222	1.7	239	1.2	523	1.8
Addiction specialists	-	-	60	0.3	19	0.1
Infectology	38	0.3	55	0.3	58	0.2
Epidemiology	-	-	5	0.03	-	-
Dermatology & venerology	84	0.6	127	0.6	166	0.6
Radiology	229	1.7	254	1.3	506	1.7
Pathology	53	0.4	35	0.2	60	0.2
Forensic medicine	-	-	47	0.2	46	0.2
Laboratory	122	0.9	143	0.7	90	0.3
Hygiene	-	-	1	0.005	-	-
Others	458	3.5	1319	6.6	2407	8.2

* Practising physicians – persons who have completed studies in medicine at university level (granted by adequate diploma), who are licensed to practice and who provide services directly to patients. Data do not include the practising physicians employed in the state administration institutions.

¹ Includes specialists of internal medicine, cardiologists, rheumatologists, endocrinologists, nephrologists, gastroenterologists, haematologists, pulmonologists.

² Includes surgeons, neurosurgeons, thoracic surgeons, cardiovascular surgeons, urologists, plastic surgeons, transplantologists, paediatric surgeons, traumatologists, orthopaedists.

Hospital beds by speciality at the end of 2013

	Estonia ¹			Latvia ²			Lithuania		
	Number of beds	Per 10 000 population	%	Number of beds	Per 10 000 population	%	Number of beds	Per 10 000 population	%
TOTAL	7394	56.2	100	11673	58.0	100	26604	90.4	100
of which:									
Internal medicine	1149	8.7	15.5	1871	9.3	16.0	4674	15.9	17.6
Rehabilitation	342	2.6	4.6	807	4.0	6.9	1623	5.5	6.1
Surgery (including orthopaedics)	1174	8.9	15.9	2223	11.0	19.0	4373	14.9	16.4
Oncology (including radiology)	176	1.3	2.4	513	2.5	4.4	663	2.3	2.5
Otolaryngology	62	0.5	0.8	94	0.5	0.8	277	0.9	1.0
Ophthalmology	21	0.2	0.3	78	0.4	0.7	235	0.8	0.9
Obstetrics	258	2.0	3.5	433	2.2	3.7	808	2.7	3.0
Gynaecology	179	1.4	2.4	275	1.4	2.4	602	2.0	2.3
Neurology	153	1.2	2.1	587	2.9	5.0	1447	4.9	5.4
Dermatology & venerology	19	0.1	0.3	6	0.03	0.1	114	0.4	0.4
Infectious	153	1.2	2.1	476	2.4	4.1	399	1.4	1.5
Tuberculosis	184	1.4	2.5	555	2.8	4.8	985	3.3	3.7
Paediatrics	253	1.9	3.4	497	2.5	4.3	1359	4.6	5.1
Psychiatry	751	5.7	10.2	2292	11.4	19.6	2998	10.2	11.3
Addiction treatment	-	-	-	232	1.2	2.0	250	0.8	0.9
General & nursing	2011	15.3	27.2	734	3.6	6.3	5066	17.2	19.0

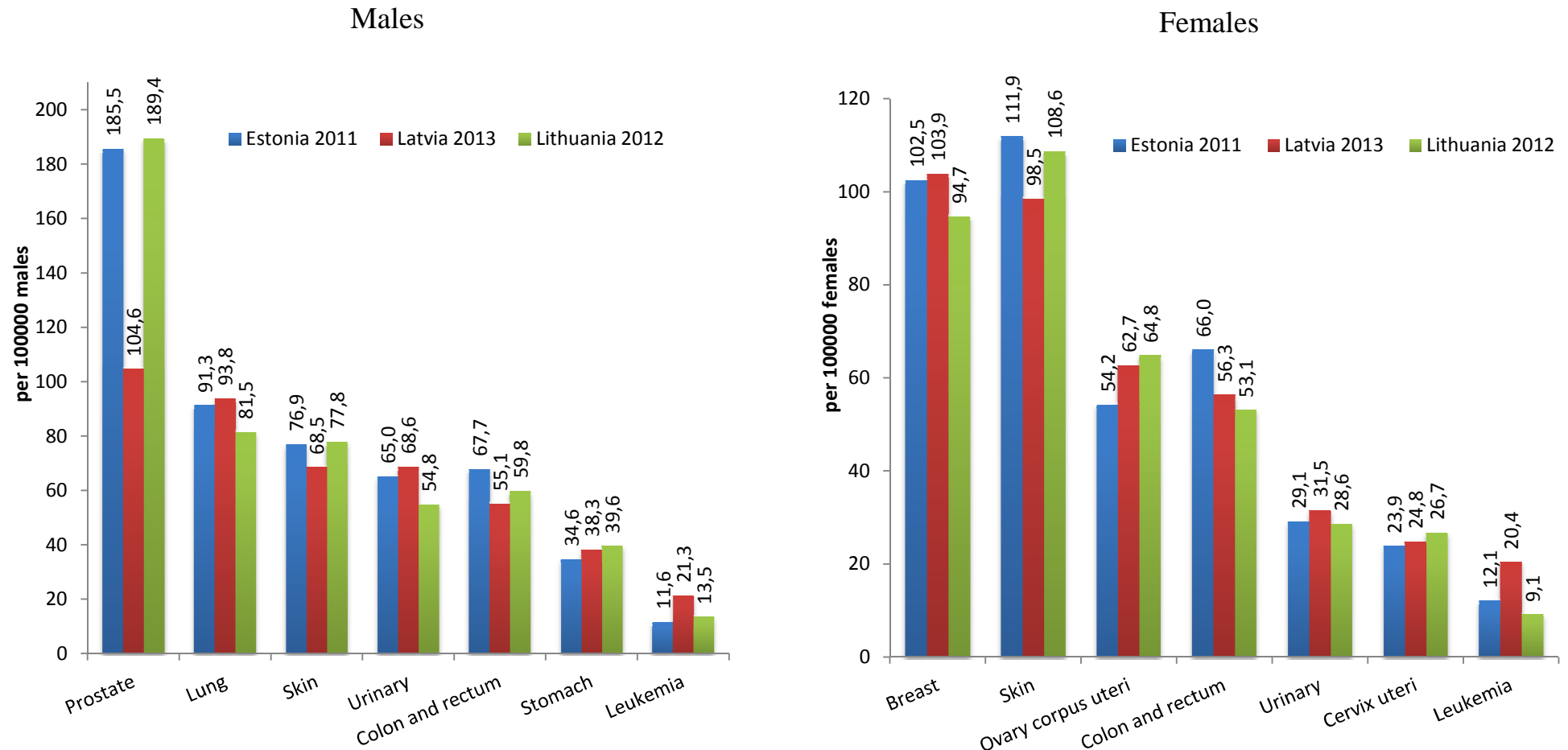
¹ Without short term social care beds.² Hospital beds average per year, excluding short-term social care beds

Selected notifiable diseases per 100 000 population in 2013

	ICD-10	Estonia	Latvia	Lithuania
Salmonella infections	A02	14.1	19.5	35.9
Bacillary dysentery	A03	0.9	0.01	1.1
Enteritis Rotaviralis	A08.0	106.1	168.2	104.0
Other intestinal infections	A04, A05, A08.1-5, A09	115.9 ¹	380.2 ²	472.3
Diphtheria	A36	-	0.7	-
Whooping cough	A37	4.2 ³	10.0	2.2
Meningococcal infection	A39	0.6	0.4	3.0
Measles	B05	0.2	-	1.2
Tick-borne viral encephalitis	A84	8.7	13.1	16.9
Viral hepatitis, total	B15-B19	23.4	72.8	7.8
A	B15	0.5	0.6	2.2
B	B16.2, B16,9	0.8 ⁴	4.3 ⁴	1.2
C	B17.1	2.1	2.6	2.0
Acute upper respiratory infections	J00-J06	14324.5 ⁵	...	25367.1
Influenza	J10-J11	419.5 ⁶	...	1691.0
Syphilis	A50-A53	2.9	6.4	9.2
Gonorrhoea	A54	10.3	27.7	6.4
AIDS	B20-B24	1.8	6.7	1.5
HIV carrier	Z21	24.7	16.8 ⁷	6.0
Incidence of tuberculosis (excl. relapses)	A15-A19	17.1	38.3	46.8
Incidence of malignant neoplasms	C00-C97	603.2 ⁸	576.3	593.6 ⁹

¹ A04.0-6, 8-9; A05; A08.1-5² A04; A05; A07.9; A08.1-4; A09³ A37.0⁴ B16 ⁵ J06 ⁶ J09-J11 ⁷ Z21; R75⁸ data for 2011 ⁹ data for 2012

Incidence of malignant neoplasms by main sites



Sources:

EE: Estonian Cancer Registry

LV: Register of Patients with Particular Diseases, Patients with Cancer. Data updated 17.04.2015.

LT: Institute of Oncology of Vilnius University, Cancer register

Hospital beds use by speciality in 2013

	Estonia ¹					Latvia ¹					Lithuania ²				
	Admission per 1000 pop.	Bed occupancy		Average length of stay	Bed turnover	Admission per 1000 pop.	Bed occupancy		Average length of stay	Bed turnover	Admission per 1000 pop.	Bed occupancy		Average length of stay	Bed turnover
		Days	%				Days	%				Days	%		
TOTAL	182.2	269.6	73.9	8.0	33.7	187.3	268.1	73.5	8.3	32.3	274.2	276.2	75.7	9.0	30.6
Internal medicine	37.5	291.4	79.8	6.4	43.9	38.3	258.5	70.8	6.1	42.5	57.1	287.4	78.7	7.6	37.8
Rehabilitation	5.4	270.7	74.2	11.2	23.8	9.4	286.2	78.4	12.2	23.5	6.4	268.8	73.6	20.5	13.1
Surgery (including orthopaedics)	44.9	254.6	69.7	4.9	51.2	43.9	254.6	69.8	6.7	38.3	72.7	241.7	66.2	4.9	49.3
Oncology (include radiology)	4.6	281.2	77.1	7.3	36.9	7.5	233.1	63.9	7.8	29.9	7.9	303.3	83.1	8.4	36.2
Otolaryngology	6.9	223.6	61.3	1.6	143.3	2.2	207.8	56.9	4.4	47.2	6.0	236.0	64.7	3.7	63.9
Ophthalmology	1.4	134.5	36.9	1.6	83.6	3.1	172.5	47.3	2.2	78.9	9.7	208.3	57.1	1.8	114.5
Obstetrics	13.8	199.8	54.7	2.9	69.0	11.8	220.6	60.5	4.0	54.8	12.9	211.0	57.8	4.5	47.3
Gynaecology	9.3	173.3	47.5	2.5	69.7	7.4	184.8	50.6	3.4	54.6	12.6	195.3	53.5	3.1	63.0
Neurology	6.6	281.7	77.2	5.1	53.4	10.7	275.4	75.5	7.4	37.4	17.1	296.8	81.3	8.7	34.3
Dermatology & venerology	1.0	257.2	70.5	8.1	31.9	0.1	149.2	40.9	4.5	33.0	1.0	282.5	77.4	10.3	27.3
Infectious	6.0	240.7	65.9	4.8	49.7	12.5	254.9	69.8	4.7	54.0	7.9	285.8	78.3	4.7	61.2
Tuberculosis	0.5	264.9	72.6	66.1	3.9	3.3	270.5	74.1	22.4	12.1	1.4	299.5	82.0	69.2	4.3
Paediatrics	10.6	220.7	60.5	3.7	57.4	12.2	239.9	65.7	5.0	48.0	22.0	247.8	67.9	4.9	50.4
Psychiatry	9.5	315.6	86.5	17.8	17.7	9.3	335.7	92.0	41.3	8.1	11.6	263.7	72.2	22.0	12.0
Addiction treatment	-	-	-	-	-	6.7	238.1	65.2	4.1	58.3	1.7	210.3	57.6	10.9	19.3
General & nursing	14.9	293.5	80.4	26.1	11.2	9.0	234.3	64.2	9.3	25.3	9.9	331.7	90.9	49.4	6.7

¹ Excluding short-term social care beds

² Including hospital day cases (about 7% of admissions)

Discharges¹ by groups of diseases in 2013

	Estonia ²				Latvia ³				Lithuania			
	Children (0-14)		Adults (15 +)		Children (0-17)		Adults (18 +)		Children (0-17)		Adults (18 +)	
	discharges per 1000 pop.	average length of stay	discharges per 1000 pop.	average length of stay	discharges per 1000 pop.	average length of stay	discharges per 1000 pop.	average length of stay	discharges per 1000 pop.	average length of stay	discharges per 1000 pop.	average length of stay
Certain infectious and parasitic diseases	23.6	2.7	4.3	16.4	22.0	4.9	5.9	15.5	31.2	4.2	5.1	25.2
Neoplasms	4.7	3.9	23.1	7.8	3.6	6.9	19.3	8.0	3.8	7.8	24.4	9.8
Diseases of the blood and blood forming organs and certain disorders involving the immune mechanisms	1.0	3.0	1.7	6.9	0.8	6.3	1.2	6.5	1.2	4.6	1.6	7.3
Endocrine, nutritional and metabolic diseases	1.6	4.1	4.1	8.3	4.0	10.3	3.0	6.9	4.4	7.2	3.9	9.3
Mental and behavioural disorders	4.9	10.2	12.4	17.5	7.8	22.8	18.1	22.3	9.4	12.7	13.5	22.5
Diseases of the nervous system	6.1	6.0	6.3	8.9	10.8 ⁴	9.0 ⁴	10.5 ⁴	5.2 ⁴	8.3	9.9	9.5	12.4
Diseases of the eye and adnexa	0.8	1.2	1.4	2.1					3.4	4.2	6.5	2.6
Diseases of the ear and mastoid process	4.7	3.3	0.9	3.9					3.0	5.4	1.6	7.1
Diseases of the circulatory system	1.2	5.9	38.2	11.2	2.7	5.2	35.4	7.0	2.8	4.8	62.6	14.1
Diseases of the respiratory system	40.0	3.1	11.9	6.5	53.5	5.3	11.6	7.4	77.7	6.0	15.7	9.8
Diseases of the digestive system	7.8	3.0	15.6	5.2	15.4	3.7	14.3	5.6	17.4	4.0	20.3	6.5
Diseases of the skin and subcutaneous tissue	2.3	3.4	3.1	9.4	4.6	4.7	2.4	7.4	6.6	4.6	3.7	9.4
Diseases of the musculo-skeletal and connective tissue	2.2	4.2	12.8	6.9	6.1	8.1	16.0	8.7	6.9	10.9	19.9	8.6
Diseases of the genitourinary system	4.4	4.1	10.9	4.7	5.9	5.1	9.9	4.6	6.7	5.1	15.2	5.4
Pregnancy, childbirth and puerperium ⁵	0.1	3.3	35.5	2.8	2.9	3.9	34.0	3.9	2.5	4.1	32.7	4.2
Certain conditions originating in perinatal period	17.6	7.0	-	-	12.1	6.9	-	-	20.2	6.4	-	-
Congenital malformations, deformations and chromosomal abnormalities	7.1	5.0	0.6	5.7	5.3	9.5	0.4	5.9	7.3	6.8	0.4	5.9
Symptoms, signs and abnormal clinical and laboratory findings, not elsewhere classified	5.0	2.3	1.3	4.9	1.3	2.9	0.3	5.5	11.4	10.7	1.5	5.3
Injury, poisoning and certain other consequences of external causes	10.3	2.4	12.5	9.3	13.6	3.7	15.6	7.1	15.2	4.7	17.5	11.6
Factors influencing health and contact with health services	0.7	3.1	1.5	5.7	-	-	-	-	17.9	9.4	9.5	16.2
TOTAL	146.1	4.0	181.8	8.4	171.1	6.5	182.6	8.4	256.0	6.5	250.3	11.0

¹ Excluding hospital day cases² Deceased are included, healthy newborns are excluded³ Excluding short-term social care beds, patients transferred to another hospital or died patients⁴ Diseases of the nervous system and sense organs⁵ Per 1000 female population

Surgical operations¹ in the hospitals in 2013

	Estonia			Latvia			Lithuania		
	Number	Per 100 000 population	%	Number	Per 100 000 population	%	Number	Per 100 000 population	%
TOTAL	72985	5537.6	100	119125	5918.8	100	260247	8799	100
On the nervous system	2582	195.9	3.5	3178	157.9	2.7	8246	278.8	3.2
On the endocrine system	491	37.3	0.7	755	37.5	0.6	1848	62.5	0.7
On the eye	1786	135.5	2.4	4448	221.0	3.7	16080	543.7	6.2
On the ear, nose, throat, mouth, pharynx, facial bones and joints	9287	704.6	12.7	5501	273.3	4.6	18764	634.4	7.2
On the respiratory system	1062	80.6	1.5	1796	89.2	1.5	10409	351.9	4.0
On the heart and central vessels	5263	399.3	7.2	8311	412.9	7.0	27806	940.1	10.7
On the peripheral vessels and lymphatic system	2918	221.4	4.0	3370	167.4	2.8			
On the digestive system and spleen	12227	927.7	16.8	14120	701.6	11.9	46491	1571.9	17.9
On the urinary organs	2556	193.9	3.5	4852 ⁴	241.1 ^{4,5}	4.1 ⁴	11336	383.3	4.4
On the prostate ²	939	152.5	1.3				5715	419.5	2.2
On female genital organs ³	7453	1061.0	10.2	12098	1109.1	10.2	23672	1483.9	9.1
Obstetrical operations ³	8415	1197.9	11.5	16928	1551.8	14.2	20920	1311.4	8.0
On the musculoskeletal system	12789	970.3	17.5	23555	1170.3	19.8	52497	1774.9	20.2
On the breast	914	69.3	1.3	2028	100.8	1.7	3047	103.0	1.1
On the skin and subcutaneous tissue	3235	245.4	4.4	12153	603.8	10.2	13416	453.6	5.1
Other procedures	1068	81.0	1.5	6032	299.7	5.1	-	-	-

¹ Hospital day cases are excluded; only the main procedure per discharge is registered² Per 100 000 male population ³ Per 100 000 female population ⁴ Surgical operations on the kidney, ureter, prostate ⁵ Per 100 000 population

Sales of medicinal products by ATC group in 2013
DDD/1 000 inhabitants/day

ATC group	Estonia	Latvia	Lithuania
A Alimentary tract and metabolism	144.6	169.5	118.9
B Blood and blood forming organs	96.7	82.3	73.9
C Cardiovascular system	402.3	272.1	438.9
D Dermatologicals	1.7	0.4	0.6
G Genitourinary system and sex hormones	54.2	11.2	29.6
H Systemic hormonal preparations, excl. sex hormones and insulins	23.4	22.6	37.0
J Antiinfectives for systemic use	18.4	16.2	23.0
L Antineoplastic and immunomodulating agents	9.1	5.4	5.9
M Musculo-skeletal system	73.6	67.9	72.4
N Nervous system	103.9	81.3	140.9
P Antiparasitic products, insecticides and repellents	0.9	0.8	0.7
R Respiratory system	75.6	48.5	69.3
S Sensory organs	25.1	1.9	20.3
V Various	0.11	0.06	0.13
Total	1029.6	780.1	1031.4

Sources:

EE: State Agency of Medicines

LV: Statistics on Medicines Consumption 2014

LT: State Medicines Control Agency

Average salary of medical personnel in 2013
(Average salary, including additional payments, EUR)

	Estonia	Latvia	Lithuania
Physicians	1818	1031	1125
Nurses	974	608	590

Notes: Average salary includes personal income tax, and other taxes paid by the employee. It does not include social tax and other social contributions paid by the employer. The average monthly wage includes basic additional remuneration, additional payments for evening work, night work, work on days off or during public holidays and additional payments for overtime. Informal payments are not included.

EE:

Physicians average salary includes dentists and resident physicians.

Nurses average salary includes midwives and dental nurses.

Source of data: National Institute for Health Development, Department of Health Statistics. Annual report on hourly wages of health care personnel in March.

Coverage:

- All health care providers, both public and private sectors.
- The calculation of average monthly wage involves only full-time employees, i.e. those who worked with the full workload and worked for the whole month under survey.
- The average monthly wage includes irregular additional payments (quarterly and annual bonuses and other irregular performance and value payments) which are paid in March.

LV:

Physicians average salary includes dentists, functional specialists (e.g. physiotherapists, speech therapists, dietary specialists, ergotherapy specialists etc.).

Nurses average salary includes physician's assistants, midwives, dental technicians, laboratory technicians, dental hygiene specialists, dentist's assistants.

Source of data: the National Health Service of Latvia www.vmnvd.gov.lv

Coverage:

- Health care establishments providing health care services that are covered from the state budget.

LT:

Nurses average salary includes physician's assistants, midwives, dental technicians, laboratory technicians, dental hygiene specialists, dentist's assistants.

Source of data: physicians salary – Statistics Lithuania, nurses salary – National Health Insurance Fund

Coverage:

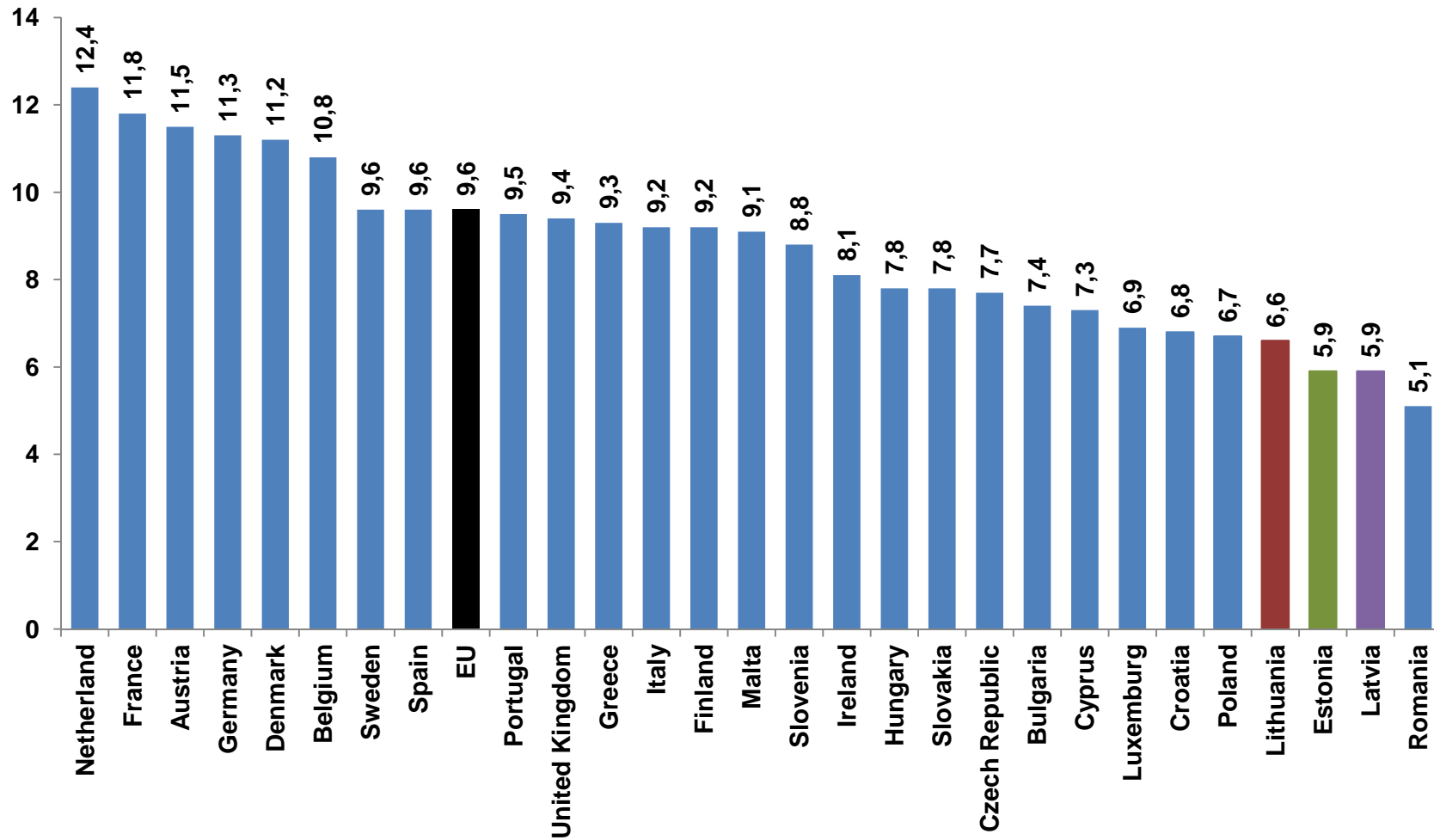
- Nurses salary includes health care institutions (public or private) having contracts with National Health insurance Fund only.

Health care expenditure in 2012

(Data calculated using OECD methodology of System of Health Accounts version SHA 1.0)

	Estonia	Latvia	Lithuania
Total health care expenditure (in million Euros):	1025.3	1304.6	2196.4
public	807.2	789.9	1432.7
of which social security funds	698.7	...	1220.3
private	203.0	479.4	684.0
of which private households out-of-pocket expenditure	186.1	448.7	666.8
Current expenditure on health care (in million Euros)	1011.5	1186.2	2096.9
Expenditure on gross capital formation in health care (in million Euros)	13.8	118.4	99.5
Gross domestic product (in million Euros)	17415.1	22043.0	33314.0
Total health care expenditure per capita (in million Euros)	765.3	641.0	735.1
Total expenditure on health care as percentage of GDP (%)	5.9	5.9	6.6
Public expenditure on health care as percentage of GDP (%)	4.6	3.6	4.3
Private expenditure on health care as percentage of GDP (%)	1.2	2.2	2.1
Public expenditure on health care as percentage of total expenditure	78.7	60.5	65.2
Expenditure on gross capital formation as percentage of total expenditure	1.3	9.1	4.5
The structure of current expenditure on health care by health care functions (%):			
curative care	52.8	47.1	47.9
rehabilitative care	2.1	1.9	4.5
long-term care	4.4	6.5	7.7
ancillary services to health care	11.1	9.8	5.0
medical goods dispensed to out-patients	24.3	29.3	31.8
prevention and public health services	3.3	2.8	1.1
health administration and health insurance	2.0	2.6	2.0

Total health care expenditure as % of GDP in EU member states in 2012



Obstetric Definitions

Live birth -	A foetus that after complete expulsion or extraction from its mother breathes or shows any other evidence of life, irrespective of the duration of the pregnancy.	used for international comparison including births with a weight of 1000 g or more.
Still birth -	Death prior to the complete expulsion or extraction from its mother of a product of conception after 22 weeks of gestation. The standard rate is used for international comparison including births with a weight of 1000 g or more.	
Infant death -	A live-born infant who dies during the first year of life.	
Neonatal death -	Death occurring at the age of 0 to 27 full days of life (27 days 23 hours 59 min.). The first day of life is considered as day zero.	
Early neonatal death -	Death occurring at the age of 0 to 6 full days of life (6 days 23 hours 59 min.). The first day of life is considered as day zero.	
Perinatal death -	Foetal deaths and live-born infants who die at the age of 0 to 6 full days of life. The standard rate is	
		Maternal death - The death of a woman while pregnant or within 42 days after termination of pregnancy, irrespective of the duration and the site of the pregnancy, from any cause related to or aggravated by the pregnancy or its management, but not from accidental or incidental causes.
		Abortion - Spontaneous or induced (legal, therapeutic, criminal) abortion is the termination of pregnancy or artificial extraction of the product of the conception during the first 22 weeks of gestation.
		Still birth rate - The average number of children that would be born per woman if all women lived to the end of their childbearing years and bore children according to a given set of age-specific fertility rates.

Sources

1. Statistical Yearbook of Estonia 2014. Statistics Estonia. Tallinn, 2014. <http://www.stat.ee/72570>
2. Statistical database on the website of Statistics of Estonia: <http://www.stat.ee>
3. Health Statistics and Health Research Database of National Institute for Health Development: <http://www.tai.ee/tstua>
4. Databases of Central Statistical Bureau of Latvia: <http://csb.gov.lv>
5. Statistical overviews, databases and surveys of the Centre for Disease Prevention and Control of Latvia
6. Statistical Yearbook of Health Care in Latvia, 2013: <http://www.spkc.gov.lv/>
7. National Health Service: <http://www.vmnvd.gov.lv>
8. State Agency of Medicines of Latvia: <http://www.zva.gov.lv/>
9. Statistical Yearbook of Lithuania 2013; Department of Statistics to the Government of the Republic of Lithuania; Vilnius, 2014; <http://www.osp.stat.gov.lt>
10. Demographic Yearbook 2013; Department of Statistics to the Government of the Republic of Lithuania; Vilnius, 2014; <http://www.osp.stat.gov.lt>
11. Official Statistics Portal, Statistics Lithuania: <http://osp.stat.gov.lt/en>
12. Health Statistics of Lithuania 2013; Health Information Centre, Institute of Hygiene; Vilnius, 2014; <http://www.hi.lt>
13. Health for All database, WHO Regional Office for Europe; <http://www.euro.who.int>

Further information:

National Institute for Health Development

Hiiu 42, 11619 Tallinn, Estonia

Phone: +372 6593 900

Fax: +372 6593 901

E-mail: tai@tai.ee

Website: www.tai.ee

M .Jesse, Director

The Centre for Disease Prevention and Control of Latvia

22 Dunties Street, Riga, LV-1005, Latvia

Phone: +37167501590

Fax: +37167501591

E-mail: info@spkc.gov.lv

Website: <http://www.spkc.gov.lv>

I.Šmate, Director

Health Information Centre of Institute of Hygiene

Didzioji str. 22, LT-01128, Vilnius, Lithuania

Phone: + 370 52773303

Fax: + 370 52624583

E-mail: institutas@hi.lt

Website: <http://sic.hi.lt>; www.hi.lt

Dr. R. Gurevicius, Head of Health Information Centre

Health in the Baltic Countries 2013

Editorial board:

National Institute for Health Development of Estonia:

L. Panov, M. Rätsep, K. Karelson, G. Kivisild, M. Ruuge, I. Valdmaa, H. Liivlaid

The Centre for Disease Prevention and Control of Latvia:

J. Misins, I. Zile, Z. Pavlovska, M. Pasevska, B. Zarina, B. Velika, Z. Baltane, J. Perevoscikovs

Health Information Centre, Institute of Hygiene:

R. Gaidelyte, D. Tendziagolskyte